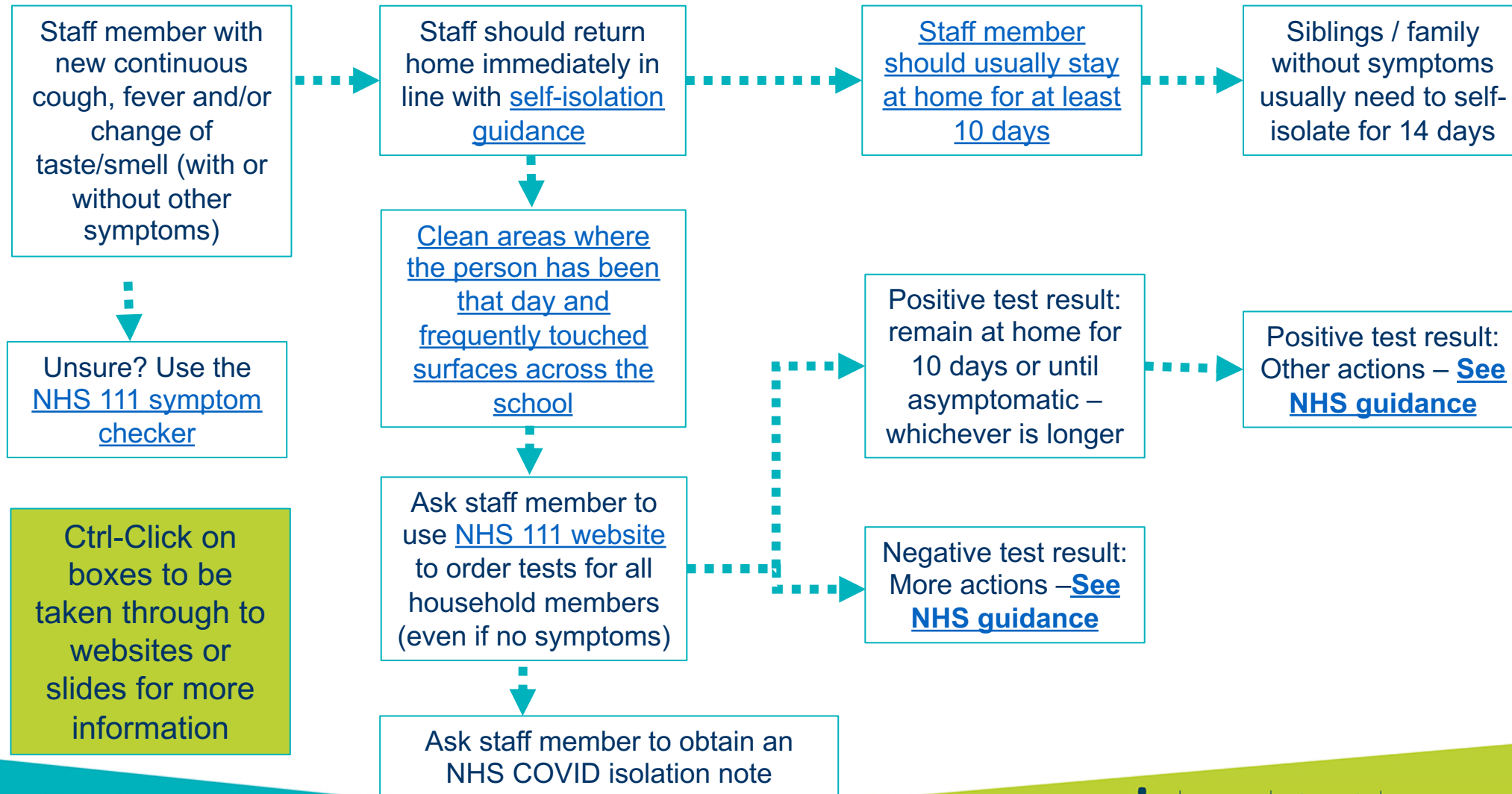
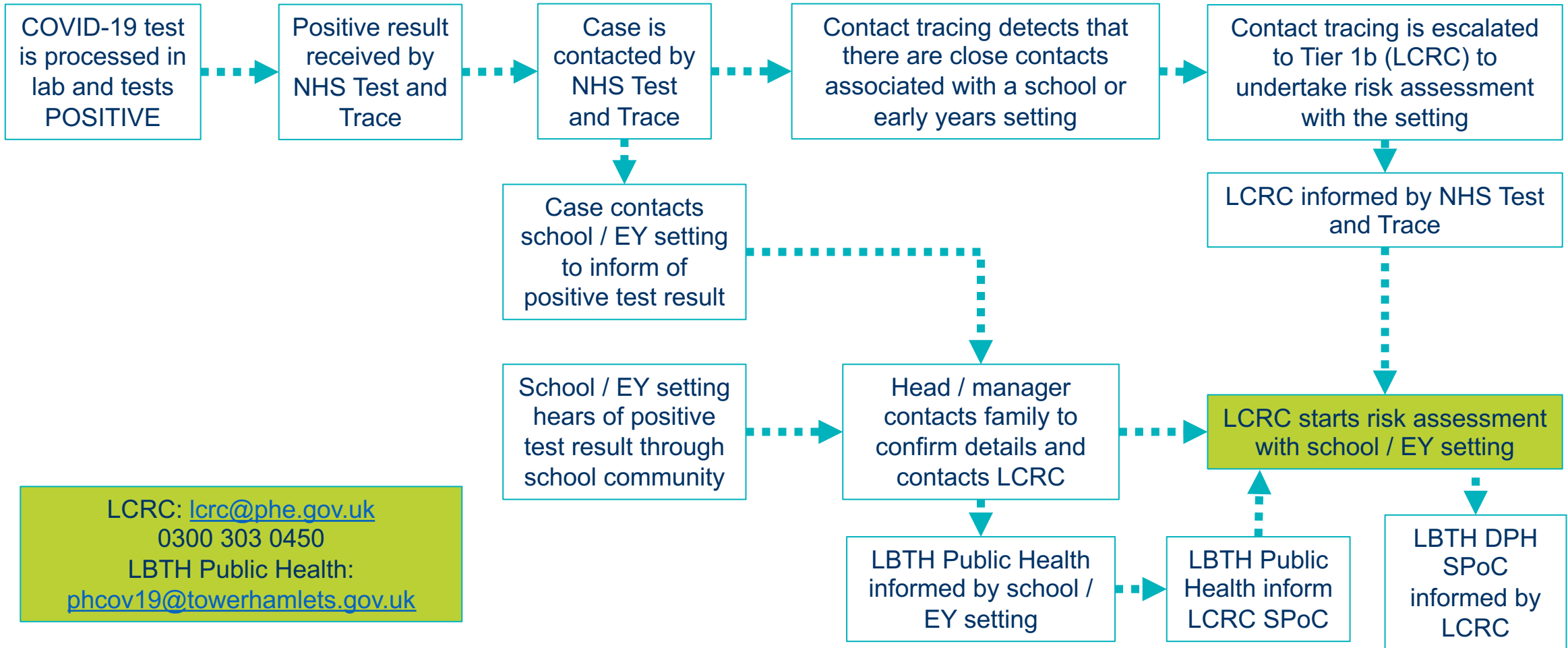


# What to do: Staff with coronavirus symptoms



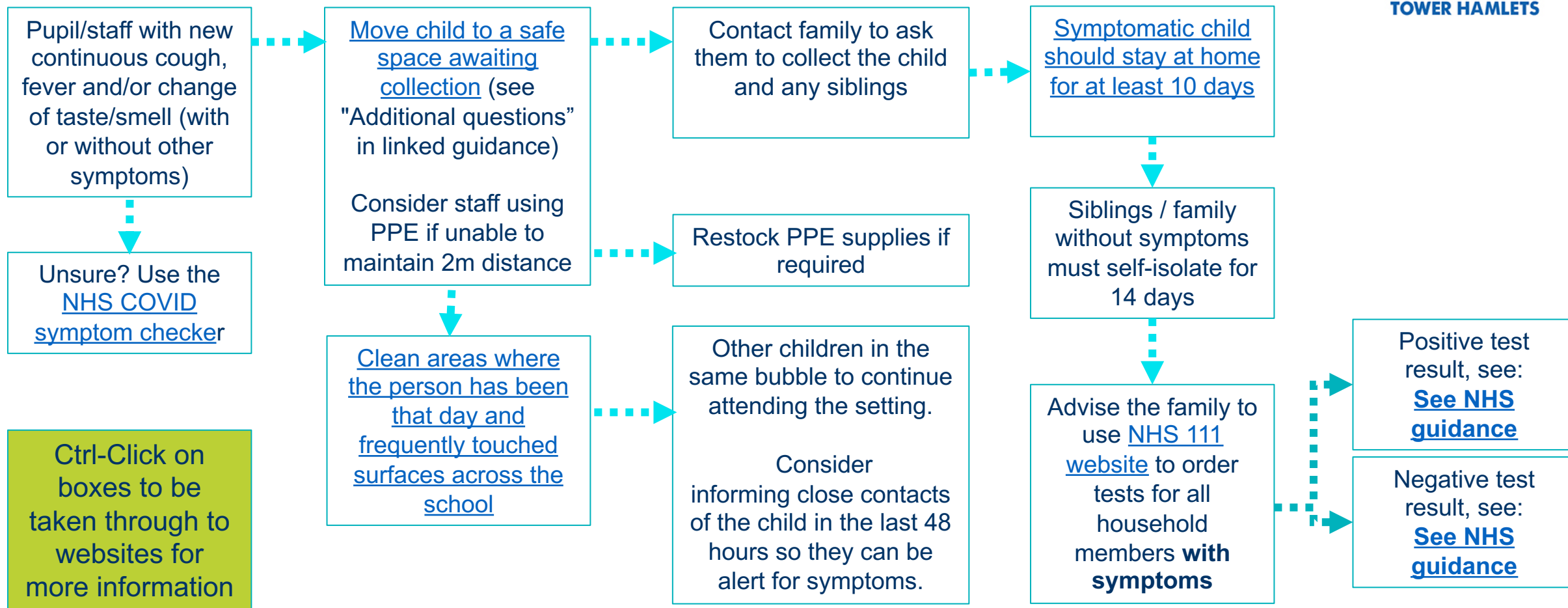
# Notification of positive test result to risk assessment - schools and educational settings



LCRC: [lcrc@phe.gov.uk](mailto:lcrc@phe.gov.uk)  
 0300 303 0450  
 LBTH Public Health:  
[phcov19@towerhamlets.gov.uk](mailto:phcov19@towerhamlets.gov.uk)



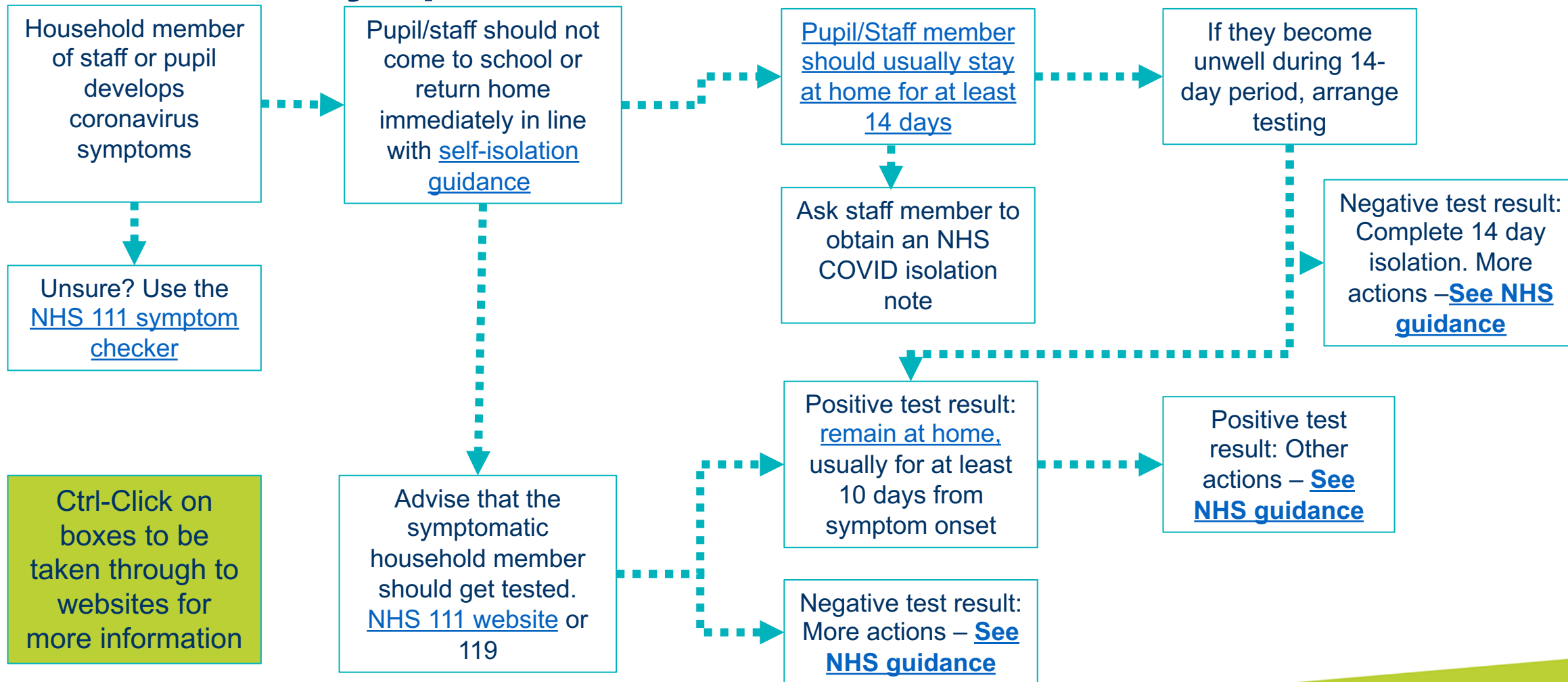
# What to do: Pupil with coronavirus symptoms



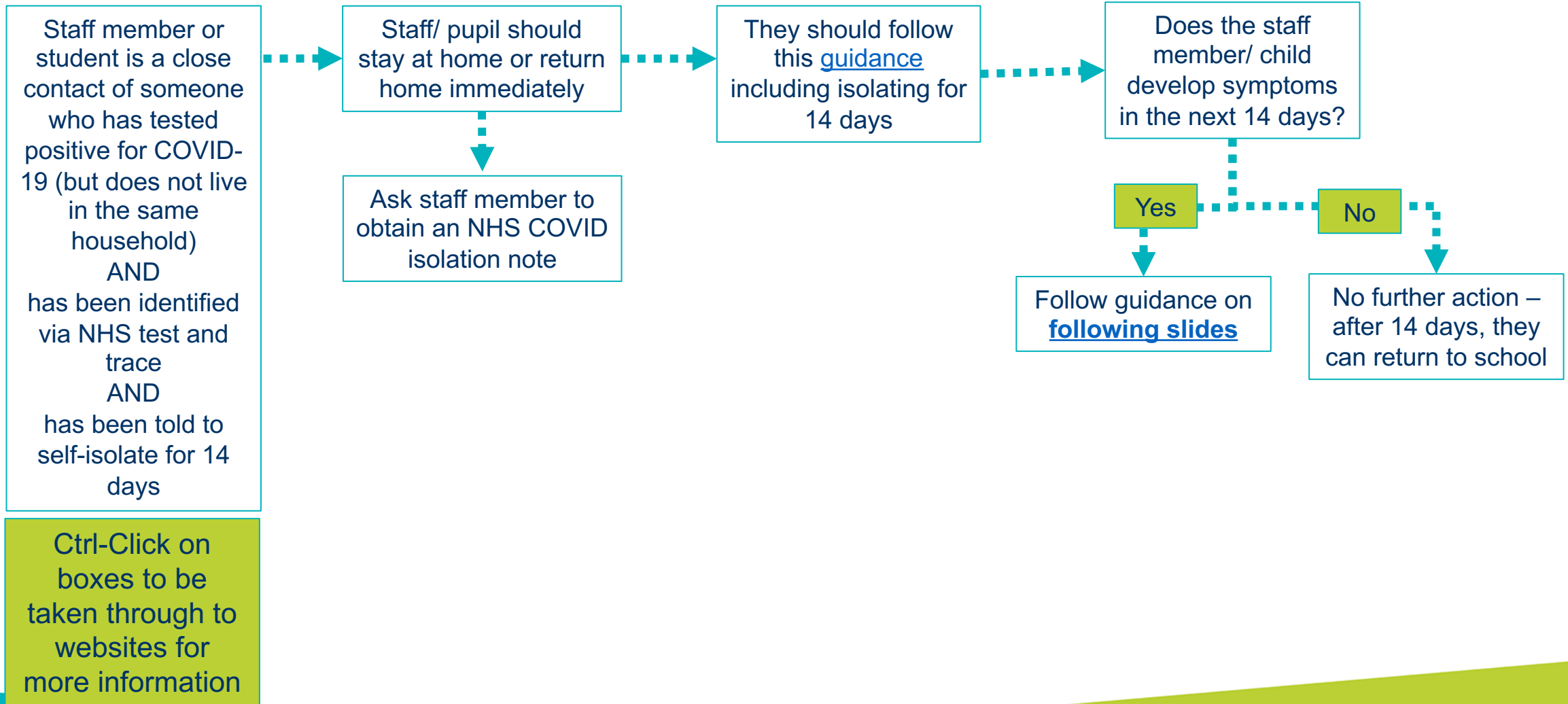
Ctrl-Click on boxes to be taken through to websites for more information



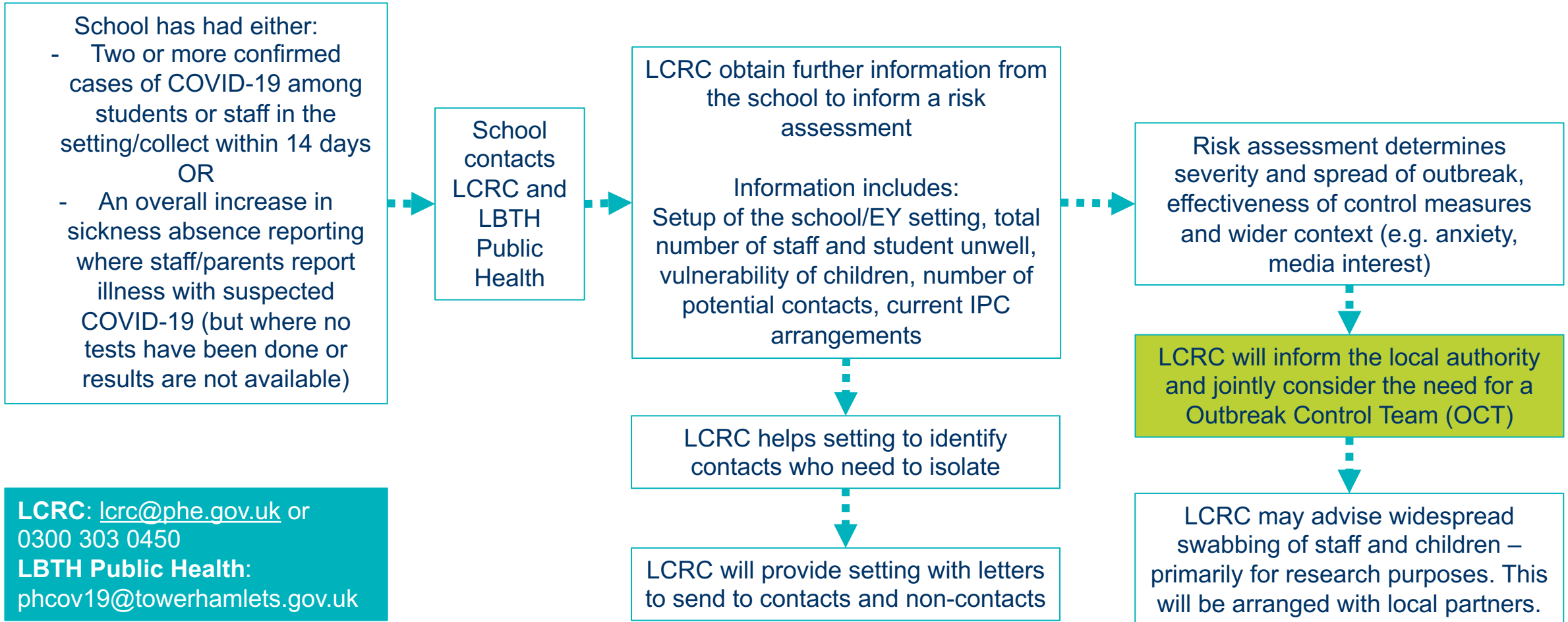
# What to do: Household member of staff/pupil develops coronavirus symptoms



# What to do: Staff/ pupil is a close contact of someone who has tested positive with COVID



# Flowchart for outbreaks in schools and early years settings



**LCRC:** [lcrc@phe.gov.uk](mailto:lcrc@phe.gov.uk) or 0300 303 0450  
**LBTH Public Health:** [phcov19@towerhamlets.gov.uk](mailto:phcov19@towerhamlets.gov.uk)

